

alfanar WEATHERPROOF RANGE



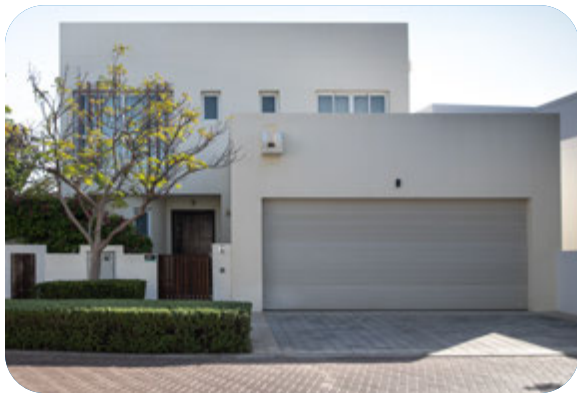
Introduction

The IP66 Weatherproof Switch products comprise a robust thermoplastic enclosure and are intended for interior and exterior use wherever water and dust proofing are required.

All of the products are rated with international protection code IP66 which means that the sealed construction provides protection against the ingress of water and dust.

Wide Applications

Typical applications include areas heavily exposed to moisture and dust such as house, garden, parking, maingate, gym, service stations, industries, laboratories, commercial and public buildings.



Product Features

Weatherproof & Dust Protection

The IP66 Weatherproof Switch products need to be fitted with waterproof cables or conduit entries to maintain their IP rating once installed. It affords an easy and safe wall mounting control for equipment such as lighting, bell, garden water pumps etc. up to 20A current rating.

IP66 Rated

The sealed construction of the switch provides a high degree of protection against the ingress of water and dust, backed by an ingress protection rating of IP66.

Tough Enclosure

Constructed of heavy-duty thermoplastic materials, provides excellent insulation properties and the durability to withstand denting and deformation from impacts.

Weatherproof Protection

The alfanar IP66 Switch is designed for use in indoor and outdoor environments. Its weatherproof functionality makes it ideal for installations where dirt and moisture proofing are required.

Multiple Conduit Entry

The enclosure has five knockouts on four sides and a drill out conduit entry on the rear of the box, the conduit installation process is faster and easier.

Indicator

Each switch is fitted with a neon indicator light which can be wired as a locator - the neon indicator remains illuminated when the power is ON regardless of the switch position.

Easy Installation

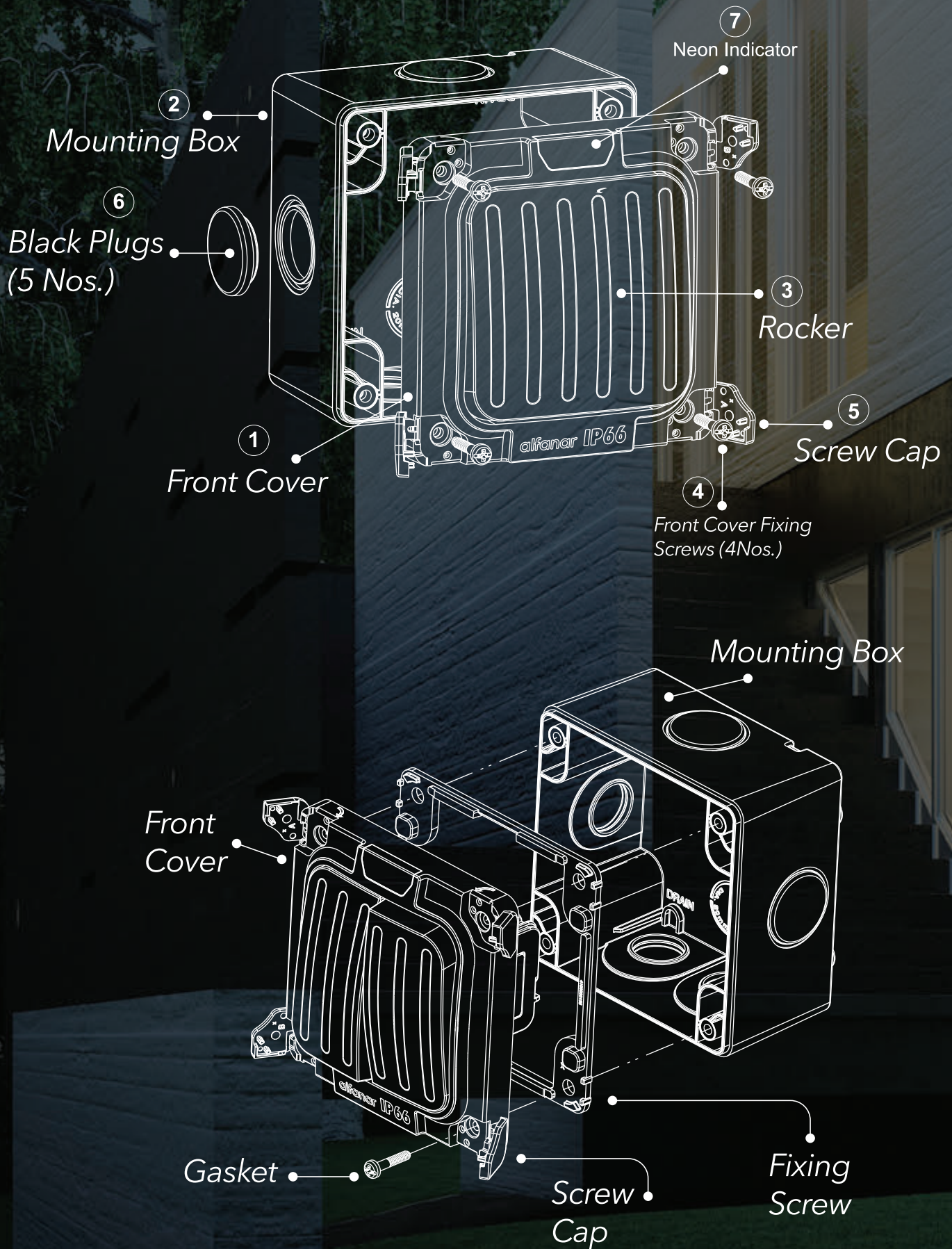
The alfanar IP66 Switch allows an easy and safe wall mount installation for both operating and control circuits up to 20A.

Silver Alloy

The current switching contact is made of silver alloy which provides superior performance throughout the switch's operational life.



Products Design Illustration



Switches and Enclosures

Single pole switches

Switches Standard : BS EN 60669-1
IP66 rating Standard : BS EN 60529
Rated Current, Voltage : 20 A, 250V~
Rated Frequency : 50/60 Hz
Operating temperature : -5°C to +55°C
Dimensions L x W x H : 96 x 96 x 74 mm



WB118

IP66 WEATHERPROOF
20A 2WAY 1G SWITCH



WB118-WB

IP55 WP 20A 2WAY 1G
SWITCH FLUSH MOUNT



WB218

IP66 WEATHERPROOF
20A 2WAY 2G SWITCH



WB218-WB

IP55 WP 20A 2WAY 2G
SWITCH FLUSH MOUNT



WB117

IP66 WEATHERPROOF
20A INT 1G SWITCH



WB117-WB

IP55 WP 20A INT 1G
SWITCH FLUSH MOUNT



WB1102-PR03

IP66 WEATHERPROOF
20A BELL PUSH 1G SWITCH



WB1102-PR03-WB

IP55 WP 20A BELL 1G
SWITCH FLUSH MOUNT



WB1102-PR04

IP66 WEATHERPROOF
20A PRESS 1G SWITCH



WB1102-PR04-WB

IP55 WEATHERPROOF
20A PRESS 1G SWITCH



WB217

IP66 WEATHERPROOF
20A INT 2G SWITCH



WB217-WB

IP55 WEATHERPROOF
20A INT 2G SWITCH

Switches and Enclosures

Double pole switch

Switch Standard : BS EN 60669-1
IP66 rating Standard : BS EN 60529
Rated Current, Voltage : 20 A, 250V~
Rated Frequency : 50/60 Hz
Operating temperature : -5°C to +55°C
Dimensions L x W x H : 96 x 96 x 74 mm



WB104

IP66 WEATHERPROOF
20A DP 1G SWITCH



WB104-WB

IP55 WP 20A DP 1G
SWITCH FLUSH MOUNT



WB204

IP66 WEATHERPROOF
20A DP 2G SWITCH



WB204-WB

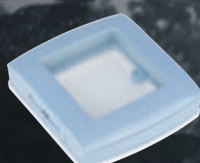
IP55 WP 20A DP 2G
SWITCH FLUSH MOUNT

Enclosures



N40

ALF SWITCH WEATHER PROOF
ENCLOSURE IP56



N40-WB

ALF SWITCH WEATHER PROOF
ENCLOSURE W/O box

Isolators



N102

ALF 2P 32A AC23A
IP66 ENCLOSED ISOLATOR



N106

ALF 4P 63A AC23A
IP66 ENCLOSED ISOLATOR

Product Features

Weatherproof & Dust Protection

The IP66 Weatherproof Socket Enclosure products are equipped with the state of the art design of the front cover to provide an elegant and robust function while keeping the 13A socket protected against the ingress of water and dust whether the socket connected with the plug or without the plug.

Padlock

For additional safety, the IP66 features a lockable cover to prevent unauthorized access of the electrical socket. Maximum shank size of the padlock should be no greater than 5.0 mm in diameter.

Weatherproof Protection

The alfanar IP66 Socket is designed for indoor and outdoor installations providing weatherproof protection against the elements. The IP66 Socket features the latest safeguards for your protection.

IP66 Rated

With an Ingress Protection rating of IP66 the sealed construction of the casing provides airtight protection against water and dust entering the socket.

Gasket material

The highly durable silicone rubber gasket is designed to operate efficiently at high ambient temperatures and features soft opening/closing of the front cover.

Multiple Conduit Entry

For easy installation, the enclosure design features multiple preconfigured knockouts, 5 knockouts on four sides and a drill out conduit entry on the back of the socket.

Tough Enclosure

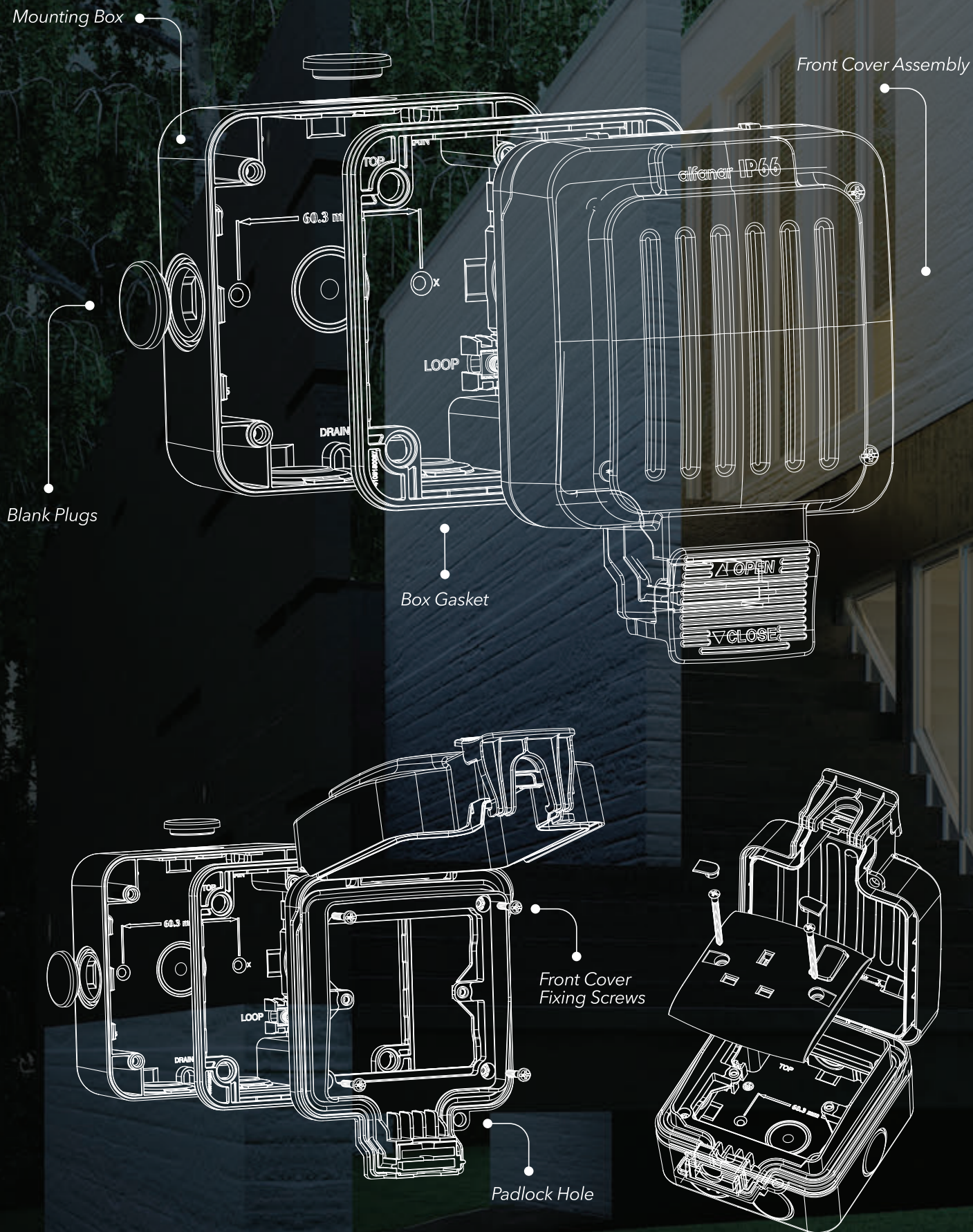
The enclosure is made of rugged thermoplastic materials providing excellent insulation properties and durability in a stylish profile.

Easy Installation

The IP66 Socket is an easy and safe wall mounted control for British and SASO Standard 13A non-rewireable and rewireable plugs.



Products Design Illustration



Sockets & Enclosures

Sockets

Sockets Standard : BS 1363-2 / IEC 60884-1

IP66 Rating Standard : BS EN 60529 / IEC 60529

Rated Current, Voltage : 13 A, 250 V~

Rated Frequency : 50/60 Hz

Operating Temperature : -5°C to +55°C



WN115N12 *

IP66 WP 1G SCKT
ENCLOSURE 7X7 WITH SOCKET



WN116N13 *

IP66 WP 2G SZ ALF 13A
DP SWITCHED SCKT



WN116N51 *

IP66 WP 1G SCKT ENCLOSURE
7X14 WITH RCD SOCKET



* N12-G2 Included in WN115N12



* N13-G2 Included in WN116N13



* N51 Included in WN116N51

Sockets & Enclosures

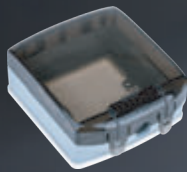
Enclosures

Sockets Standard : BS 1363-2 / IEC 60884-1
IP66 Rating Standard : BS EN 60529 / IEC 60529
Rated Current, Voltage : 13 A, 250 V~
Rated Frequency : 50/60 Hz
Operating Temperature : -5°C to +55°C



N39

ALF SOCKET WEATHER
PROOF ENCLOSURE IP56



N39-WB

ALF SOCKET WEATHER
PROOF ENCLOSURE W/O box



WN115

IP66 WP 1G SCKT
ENCLOSURE 7X7



WN115-WB

IP55 WP 1G SCKT
ENCLOSURE 7X7 FLUSH



WN116

IP66 WP 2G SCKT
ENCLOSURE 7X14



WN116-WB

IP55 WP 2G SCKT
W/O BOX 7X14

Free Maintenance Service at Home for alfanar Products

Switches, Sockets, Distribution Boards, & Circuit Breakers



In 2023 **97%** Customer Satisfaction Rate
on services delivered by our Technical Support Team

Customer Service
800-124-1333

Scan the QR code
to learn more about our
free maintenance service



Notes

Handwriting practice lines consisting of 40 horizontal dotted lines.

Notes

Handwriting practice lines consisting of 40 horizontal dotted lines.



Scan the QR to download the catalogue

199472_Sept.2024